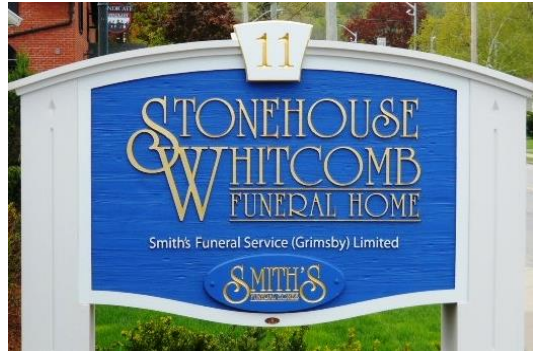




SERVICE & MERCHANDISE OPTIONS



BURLINGTON • GRIMSBY • STONEY CREEK

Effective August 9, 2023



Since 1938 we have been dedicated to providing compassionate and personalized service to our community and those we have the honour of serving. Continuing to be family-owned and operated allows us to focus on this commitment to supporting people in their time of need.

When you meet one of our staff members, you'll immediately feel like you and your loved ones are in caring and capable hands.

With both traditional and more contemporary facilities, our goal is to provide comforting and exceptional service that will exceed your needs and expectations.

Our goal is to ensure that the arrangements you make meet your needs and expectations. We will listen and provide honest answers, options and alternatives, and will explain all pricing and payment methods to your satisfaction. Whatever your wishes, we are here to help and to ensure that you and your family receive caring service and support. We also provide a complete range of pre-arrangement and pre-payment options.

If your needs cannot be satisfied by any of our four payment options, please advise us. While we are unable to extend credit terms on an installment basis, we will commit our full effort to identifying and providing additional assistance to the greatest extent possible.

Thank you for placing your trust and confidence in all of us at Smith's Funeral Homes.

CONTENTS

History	1
Burial Service Packages	5
Cremation Service Packages	11
Green Funeral Packages	19
Additional Services & Supplies	22
Disbursements	24
Casket Selections	25
Urn, Keepsake & Jewellery Selections	27
Outer Burial Containers	30
Itemized Schedule of Services	31
Payment Options	35

History



Smith's Funeral Service (Burlington) Limited is Burlington's oldest and leading funeral home. The family-owned and operated business has provided personalized and valued service for more than a century, and celebrated 80 years in 2018 under the guidance of the Smith family, and with the help of a dedicated staff of over 60 caregivers.

In 1877, Edward Williamson operated a cabinetmaking, carpentry and undertaking business which he passed on to his son, Edgar W. Williamson in 1900 and was serving our community of approximately 1,300 people.

In 1938, Wilbert J. Smith purchased the business when it was located immediately south of the Coronation Hotel on Brant Street. Wilbert had served 10 years in his uncle's funeral business in Chatham, and was assisted by his sister Jeanette who was also a licensed funeral director.



In 1942, the funeral home was moved to its present location at 485 Brant Street, following Wilbert's marriage to Kathleen (Kay) Little. As the firm expanded, other members of the family joined the staff including Wilbert's brother, Stanley D. Smith in 1948 and Wilbert's sons, Donald S. Smith in 1966 and Douglas R. Smith in 1980. Wilbert died on March 23, 1995 and Don then became president and sole owner of the company.



On January 15, 1996, a second location was opened at 1167 Guelph Line, Burlington, one stop light north of the QEW. This location features elements of design and décor to help reflect the multicultural, multi-faith focus of the Burlington community.

In August 2002, Smith's Funeral Service (Grimsby) Limited was formed when Smith's acquired Stonehouse-Whitcomb Funeral Home, located at 11 Mountain Street. This location has served Grimsby and the surrounding communities since 1928.



In April 2008, we proudly formed Smith's Funeral Service (Stoney Creek) Limited, and added the Stoney Creek Chapel to our growing list of fine facilities. This initiative brings the traditions of the Smith family run funeral homes to the people of Stoney Creek and Hamilton.

Our Mission

To help people of all faiths and beliefs create meaningful experiences that acknowledge and celebrate the life of the person who has died and facilitate the process of healing in the living in a manner which exceeds their expectations. We will do this in a caring, confidential and sensitive manner that respects the dignity and worth of the deceased, honours both traditional rituals and contemporary rites and responds to individual financial circumstances or preferences.

Professional Services

We believe our role is to help you through one of the most difficult times in a person's life, by providing information and guidance with warmth, respect and compassion. Our staff members honour the trust and confidence you place in us. We will be there to assist your family with all their needs, 24 hours a day.

Merchandise

We strive to meet the needs of every family we serve, no matter their preferences, regardless of their budget. Whether you prefer a traditional, contemporary or unique item, we are here to provide you with options that will suit your needs.

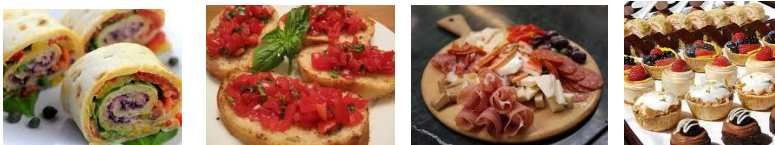
Flowers

We offer a beautiful selection of fresh florals that bring vibrancy and beauty to the chapel, visitation or reception rooms. Whether you're looking for a traditional expression of remembrance, a more modern touch or a truly unique and personalized arrangement, we are pleased to provide an exceptional selection of floral arrangements that can be ordered directly through us.



Receptions

Receptions provide an opportunity for family and friends to come together and find comfort in each other while sharing a meal or refreshments. We offer a wide variety of options and take care of the food, all serving pieces, wait-staff, set-up and clean-up for you. With our reception facilities conveniently located on-site, you and your guests will not have to worry about complicated directions or inclement weather. With a selection of menus for catering everything from sandwiches and wraps to wine and cheese samplings, we are dedicated to helping make your gathering special.





Aftercare Program

This service is provided to assist families and executors in completing forms and prioritizing tasks needing to be completed during the weeks immediately following the death of their loved one. We also assist surviving family members in organizing their own estate matters after the death of a loved one.

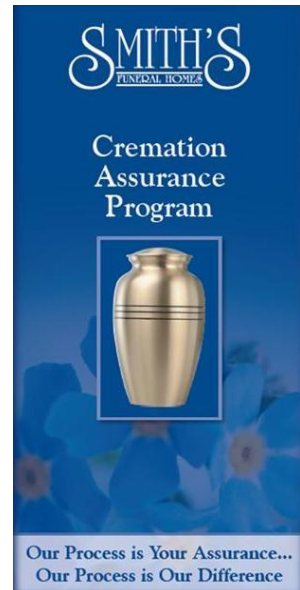


Cremation Assurance Program

This program is unique to our funeral home, and is how we ensure transparency and attention to detail throughout the entire cremation process when using Evergreen Crematorium.

A tracking system using personalized identification discs allows us to monitor each step of the cremation process, during which your loved one never leaves our care.

This is how we can guarantee that the cremated remains returned to you are those of your loved one.



The following section outlines our Service Packages which have been designed to reflect the most commonly selected services. If, however, you do not see one that meets your needs, please speak with us and we will refer to our Itemized Schedule of Services to customize a selection to better suit your preferences. (Please refer to Page 31)

Burial Packages

Families may choose services and merchandise from our Itemized Schedule of Services, or from the following Burial Packages which offer convenience and cost savings.

We offer package pricing for services ranging from a simple burial service to complete use of our facilities and staff services for all types of gatherings.

These Service Packages have been designed to reflect the most commonly selected services; if you do not see one that meets your needs, please consult with us and we will create a customized selection to better suit your preferences and respect your values.

FUNERAL SERVICE BURIAL PACKAGE

Two Periods of Visitation

The Funeral Service Package includes the supervision and coordination of all services required during the arrangement conference, 24 hour on call service, two periods of visitation (2 hours each), the funeral service and the final disposition of your loved one. Included are items such as obtaining certificates and signatures, all necessary documentation, estate settlement documents, Aftercare consultation, unlimited Proof of Death Certificates, local transfer from the place of death, and preparation and care as required. Also included is the full use of the funeral home during the visitation and funeral service (or the transfer of our equipment to the ceremony location), and areas such as offices, washrooms, public telephone, lounge, parking facilities, visitation suite, chapel and clergy room. Automotive equipment supplied in this package includes a sedan used for administrative purposes and clergy, a funeral coach (hearse) and a transfer vehicle. All vehicles are provided for a maximum three-hour period.

Professional & Staff Services

Arranging and Coordinating of all Details and Services	\$1695
Documentation, Permits and Certificates	\$325
Staff for Transfer	\$175
Basic Preparation and Casketing	\$375
Embalming	Included
Staff Services for Visitation (two 2 hour periods)	\$390
Staff Services for Ceremony	\$760
Disposition of Environmental Materials	\$ 59

Facilities

General and Service Areas of the Funeral Home	\$115
Facilities for Preparation, Sheltering & Refrigeration	\$375
Facilities for Visitation (two 2 hour periods)	\$390
Facilities for Ceremony (or Equipment Transfer offsite)	\$495

Vehicles & Equipment

General/Emergency Vehicle	\$150
Vehicle for Transfer from Place of Death	\$250
Funeral Coach for Transfer to Local Cemetery	\$495

Additional Services and Supplies

Personalized Stationery Package	\$495
Personalized Book of Memories Website	Included
Aftercare Consultation	Included
Total of Itemized Charges	\$6544
<i>Service Package Savings with Casket Selection</i>	<i>(\$510)</i>
TOTAL PACKAGE PRICE	\$6034

For additional periods of visitation, please add \$390 per period

***Deviations are not allowed from these Packaged Services;
you would otherwise refer to the Itemized Selection of Services***

FUNERAL SERVICE BURIAL PACKAGE

One Period of Visitation

The Funeral Service Package includes the supervision and coordination of all services required during the arrangement conference, 24 hour on call service, one period of visitation (2 or 3 hours), the funeral service and the final disposition of your loved one. Included are items such as obtaining certificates and signatures, all necessary documentation, estate settlement documents, Aftercare consultation, unlimited Proof of Death Certificates, local transfer from the place of death, and preparation and care as required. Also included is the full use of the funeral home during the visitation and funeral service (or the transfer of our equipment to the ceremony location), and areas such as offices, washrooms, public telephone, lounge, parking facilities, visitation suite, chapel and clergy room. Automotive equipment supplied in this package includes a sedan used for administrative purposes and clergy, a funeral coach (hearse) and a transfer vehicle. All vehicles are provided for a maximum three-hour period.

Professional & Staff Services

Arranging and Coordinating of all Details and Services	\$1695
Documentation, Permits and Certificates	\$325
Staff for Transfer	\$175
Basic Preparation and Casketing	\$375
Embalming	Included
Staff Services for Visitation (one 2 or 3 hour period)	\$195
Staff Services for Ceremony	\$760
Disposition of Environmental Materials	\$ 59

Facilities

General and Service Areas of the Funeral Home	\$115
Facilities for Preparation, Sheltering & Refrigeration	\$375
Facilities for Visitation (one 2 or 3 hour period)	\$195
Facilities for Ceremony (or Equipment Transfer offsite)	\$495

Vehicles & Equipment

General/Emergency Vehicle	\$150
Vehicle for Transfer from Place of Death	\$250
Funeral Coach for Transfer to Local Cemetery	\$495

Additional Services and Supplies

Personalized Stationery Package	\$495
Personalized Book of Memories Website	Included
Aftercare Consultation	Included

Total of Itemized Charges	\$6154
<i>Service Package Savings with Casket Selection</i>	<i>(\$430)</i>
TOTAL PACKAGE PRICE	\$5724

***Deviations are not allowed from these Packaged Services;
you would otherwise refer to the Itemized Selection of Services***

SAME DAY SERVICE BURIAL PACKAGE

(Visitation 1 Hour Prior to Service)

The Same Day Service Package includes the supervision and coordination of all services required during the arrangement conference, 24 hour on call service, the use of our facilities for 1 hour visitation followed by a Funeral Service or Memorial Service. Included are items such as obtaining certificates and signatures, all necessary documentation, estate settlement documents, which includes an Aftercare consultation and unlimited proof of death certificates, local transfer from the place of death, and preparation and care as required. Also included is the full use of the funeral home during visitation and the memorial service (or the transfer of our equipment to the ceremony location), and areas such as offices, washrooms, public telephone, lounge, parking facilities, visitation suite, chapel and clergy room. Automotive equipment supplied in this package includes a sedan used for administrative and clergy purposes, a vehicle for transfer from the place of death and a funeral coach for transfer to a local cemetery. All vehicles are provided for a maximum three-hour period.

Professional & Staff Services

Arranging and Coordinating of all Details and Services	\$1695
Documentation, Permits and Certificates	\$325
Staff for Transfer	\$175
Basic Preparation and Casketing	\$375
Embalming	Included
Staff Services for Visitation (1 Hour) & Ceremony	\$895
Disposition of Environmental Materials	\$ 59

Facilities

General and Service Areas of the Funeral Home	\$115
Facilities for Preparation, Sheltering & Refrigeration	\$375
Facilities for Visitation & Ceremony (or Equipment Transfer offsite)	\$495

Vehicles & Equipment

General/Emergency Vehicle	\$150
Vehicle for Transfer from Place of Death	\$250
Funeral Coach for Transfer to Local Cemetery	\$495

Additional Services and Supplies

Personalized Stationery Package	\$495
Personalized Book of Memories Website	Included
Aftercare Consultation	Included

Total of Itemized Charges	\$5899
<i>Service Package Savings with Casket Selection</i>	<i>(\$380)</i>
TOTAL PACKAGE PRICE	\$5519

***Deviations are not allowed from these Packaged Services;
you would otherwise refer to the Itemized Selection of Services***

PRIVATE GATHERING WITH GRAVESIDE BURIAL PACKAGE

(Private Gathering for up to 1 hour prior to a Graveside Burial)

This gathering package includes the exclusive use of our facilities for an informal gathering of invited family and friends (for up to 1 hour), and the supervision, coordination and staffing of the services required for burial to follow at a local cemetery. You will have use of the funeral home during the gathering, and areas such as offices, washrooms, lounge, parking facilities, and visitation suite. Also included are items such as obtaining certificates and signatures, all necessary documentation, estate settlement documents, which include unlimited proof of death certificates, local transfer from place of death, and preparation and care as required. Automotive equipment supplied in this package includes a sedan used for administrative purposes, a vehicle for transfer from the place of death, and staffing and a funeral coach for transfer to a local cemetery.

Professional & Staff Services

Arranging and Coordinating of all Details and Services	\$1695
Documentation, Permits and Certificates	\$325
Staff for Transfer	\$175
Basic Preparation and Casketing	\$375
Embalming	Included
Staff Services for Gathering	\$495
Staff to Transfer to Local Cemetery	\$150
Disposition of Environmental Materials	\$ 59

Facilities

General and Service Areas of the Funeral Home	\$115
Facilities for Preparation, Sheltering & Refrigeration	\$375
Facilities for Gathering	\$495

Vehicles & Equipment

General/Emergency Vehicle	\$150
Vehicle for Transfer from Place of Death	\$250
Funeral Coach for Transfer to Local Cemetery	\$495

Additional Services and Supplies

Personalized Video Tribute, Remembrance Cards and Photo Album	\$395
Personalized Book of Memories Website	Included
Aftercare Consultation	Included

Total of Itemized Charges	\$5549
<i>Service Package Savings (when Casket selected from Funeral Home)</i>	<i>(\$1245)</i>
TOTAL PACKAGE PRICE	\$4304

***Deviations are not allowed from these Packaged Services;
you would otherwise refer to the Itemized Selection of Services***

GRAVESIDE BURIAL PACKAGE

The Graveside Burial Package includes the supervision and coordination of the services required for burial, 24-hour on call service, with preparation and the use of our facilities for a brief identification confirmation by one (1) person at an unscheduled time. Included are items such as obtaining certificates and signatures, all necessary documentation, estate settlement documents, which include unlimited proof of death certificates, transfer from the place of death (within 50 km), and preparation and care as required. Also included is the staffing and coordination of the burial at a local cemetery (with up to 2 staff members), where family will be met at the graveside on a scheduled day and time.

Professional & Staff Services

Arranging and coordinating of all Details and Services	\$1550
Documentation, Permits and Certificates	\$325
Staff for Transfer	\$175
Basic preparation and casketing	\$375
Embalming	Included
Staff Services for Private Family Viewing (up to 1 hour)	Included
Staff to Transfer to Local Cemetery	\$150
Disposition of Environmental Materials	\$ 59

Facilities

General and Service Areas of the Funeral Home	\$115
Facilities for Preparation, Sheltering & Refrigeration	\$375
Facilities for Private Family Viewing (up to 1 hour)	Included

Vehicles & Equipment

General/Emergency Vehicle	\$150
Vehicle for Transfer from Place of Death	\$250
Funeral Coach for Transfer to Local Cemetery	\$495

Additional Services and Supplies

Personalized Book of Memories Website	Included
Aftercare Consultation	Included

Total of Itemized Charges	\$4019
<i>Service Package Savings with Casket Selection</i>	<i>(\$715)</i>
TOTAL PACKAGE PRICE	\$3304

***Deviations are not allowed from these Packaged Services;
you would otherwise refer to the Itemized Selection of Services***

Cremation Packages

Families may choose services and merchandise from our Itemized Schedule of Services, or from the following Cremation Packages which offer convenience and cost savings.

We offer package pricing for services ranging from a simple cremation service to complete use of our facilities and staff services for all types of gatherings.

These Service Packages have been designed to reflect the most commonly selected services; if you do not see one that meets your needs, please consult with us and we will create a customized selection to better suit your preferences and respect your values.

FUNERAL/MEMORIAL SERVICE OR CELEBRATION OF LIFE PACKAGE

Two Periods of Visitation

This Package includes the supervision and coordination of all services required during the arrangement conference, 24-hour on call service, two periods of visitation (2 hours each), the funeral, memorial service or celebration of life and the final disposition of your loved one. Included are items such as obtaining certificates and signatures, all necessary documentation, estate settlement documents, Aftercare consultation, unlimited Proof of Death Certificates, transfer from the place of death (within 50 km), and preparation and care as required. Also included is the full use of the funeral home during the visitation and funeral service (or the transfer of our equipment to the ceremony location), and areas such as offices, washrooms, public telephone, lounge, parking facilities, visitation suite, chapel and clergy room. Automotive equipment supplied in this package includes a sedan used for administrative purposes and clergy, a funeral coach (hearse) and a transfer vehicle. All vehicles are provided for a maximum three-hour period.

Professional & Staff Services

Arranging and Coordinating of all Details and Services	\$1695
Documentation, Permits and Certificates	\$325
Staff for Transfer	\$175
Basic Preparation and Casketing	\$375
Embalming	Included
Staff Services for Visitation (two 2 hour periods)	\$390
Staff Services for Ceremony	\$760
Administration and Care of Cremated Remains	\$125
Disposition of Environmental Materials	\$ 59

Facilities

General and Service Areas of the Funeral Home	\$115
Facilities for Preparation, Sheltering & Refrigeration	\$375
Facilities for Visitation (two 2 hour periods)	\$390
Facilities for Ceremony (or Equipment Transfer offsite)	\$495

Vehicles & Equipment

General/Emergency Vehicle	\$150
Vehicle for Transfer from Place of Death	\$250
Funeral Coach for Transfer to Local Crematorium	\$495

Additional Services and Supplies

Personalized Stationery Package	\$495
Personalized Book of Memories Website	Included
Aftercare Consultation & Cremation Assurance Program	Included
Total of Itemized Charges	\$6669
<i>Service Package Savings with Casket Selection</i>	<i>(\$500)</i>
TOTAL PACKAGE PRICE	\$6169

For additional periods of visitation, please add \$390 per period

***Deviations are not allowed from these Packaged Services;
you would otherwise refer to the Itemized Selection of Services***

FUNERAL/MEMORIAL SERVICE OR CELEBRATION OF LIFE PACKAGE

One Period of Visitation

This Package includes the supervision and coordination of all services required during the arrangement conference, 24-hour on call service, one period of visitation (2 or 3 hours), the funeral, memorial service or celebration of life and the final disposition of your loved one. Included are items such as obtaining certificates and signatures, all necessary documentation, estate settlement documents, Aftercare consultation, unlimited Proof of Death Certificates, transfer from the place of death (within 50 km), and preparation and care as required. Also included is the full use of the funeral home during the visitation and funeral service (or the transfer of our equipment to the ceremony location), and areas such as offices, washrooms, public telephone, lounge, parking facilities, visitation suite, chapel and clergy room. Automotive equipment supplied in this package includes a sedan used for administrative purposes and clergy, a funeral coach (hearse) and a transfer vehicle. All vehicles are provided for a maximum three-hour period.

Professional & Staff Services

Arranging and Coordinating of all Details and Services	\$1695
Documentation, Permits and Certificates	\$325
Staff for Transfer	\$175
Basic Preparation and Casketing	\$375
Embalming	Included
Staff Services for Visitation (one 2 or 3 hour period)	\$195
Staff Services for Ceremony	\$760
Administration and Care of Cremated Remains	\$125
Disposition of Environmental Materials	\$ 59

Facilities

General and Service Areas of the Funeral Home	\$115
Facilities for Preparation, Sheltering & Refrigeration	\$375
Facilities for Visitation (one 2 or 3 hour period)	\$195
Facilities for Ceremony (or Equipment Transfer offsite)	\$495

Vehicles & Equipment

General/Emergency Vehicle	\$150
Vehicle for Transfer from Place of Death	\$250
Funeral Coach for Transfer to Local Crematorium	\$495

Additional Services and Supplies

Personalized Stationery Package	\$495
Personalized Book of Memories Website	Included
Aftercare Consultation & Cremation Assurance Program	Included
Total of Itemized Charges	\$6279
<i>Service Package Savings with Casket Selection</i>	<i>(\$425)</i>
TOTAL PACKAGE PRICE	\$5854

***Deviations are not allowed from these Packaged Services;
you would otherwise refer to the Itemized Selection of Services***

SAME DAY SERVICE OR CELEBRATION OF LIFE PACKAGE

(Visitation 1 Hour Prior to Service)

The Same Day Service Package includes the supervision and coordination of all services required during the arrangement conference, 24-hour on call service, the use of our facilities for 1 hour visitation followed by a funeral, memorial service or celebration of life. Included are items such as obtaining certificates and signatures, all necessary documentation, estate settlement documents, which includes an Aftercare consultation and unlimited proof of death certificates, transfer from the place of death (within 50 km), and preparation and care as required. Also included is the full use of the funeral home during visitation and the memorial service (or the transfer of our equipment to the ceremony location), and areas such as offices, washrooms, public telephone, lounge, parking facilities, visitation suite, chapel and clergy room. Automotive equipment supplied in this package includes a sedan used for administrative and clergy purposes, a vehicle for transfer from the place of death and a funeral coach for transfer to a local crematorium. All vehicles are provided for a maximum three-hour period.

Professional & Staff Services

Arranging and Coordinating of all Details and Services	\$1695
Documentation, Permits and Certificates	\$325
Staff for Transfer	\$175
Basic Preparation and Casketing	\$375
Embalming	Included
Staff Services for Visitation (1 Hour) & Ceremony	\$895
Administration and Care of Cremated Remains	\$125
Disposition of Environmental Materials	\$ 59

Facilities

General and Service Areas of the Funeral Home	\$115
Facilities for Preparation, Sheltering & Refrigeration	\$375
Facilities for Visitation & Ceremony (or Equipment Transfer offsite)	\$495

Vehicles & Equipment

General/Emergency Vehicle	\$150
Vehicle for Transfer from Place of Death	\$250
Funeral Coach for Transfer to Local Crematorium	\$495

Additional Services and Supplies

Personalized Stationery Package	\$495
Personalized Book of Memories Website	Included
Aftercare Consultation	Included
Cremation Assurance Program	Included
Total of Itemized Charges	\$6024
<i>Service Package Savings with Casket Selection</i>	<i>(\$295)</i>
TOTAL PACKAGE PRICE	\$5729

***Deviations are not allowed from these Packaged Services;
you would otherwise refer to the Itemized Selection of Services***

MEMORIAL GATHERING PACKAGE

The Memorial Gathering Package includes the supervision and coordination of all services required for a direct cremation or burial, 24-hour on call service, and the use of our facilities for an informal gathering of family and friends (for up to 3 hours). Included are such items such as obtaining certificates and signatures, all necessary documentation, estate settlement documents, which includes unlimited proof of death certificates, transfer from the place of death (within 50 km), preparation for private viewing, and shelter of deceased. Also included is the use of the funeral home during the memorial gathering, and areas such as offices, washrooms, public telephone, lounge, parking facilities, and the visitation suite. Automotive equipment supplied in this package includes a sedan used for administrative purposes, a vehicle for transfer from the place of death and a funeral coach for transfer to a local cemetery or crematory. All vehicles are provided for a maximum three-hour period.

Professional & Staff Services

Arranging and Coordinating of all Details and Services	\$1695
Documentation, Permits and Certificates	\$325
Staff for Transfer	\$175
Basic Preparation and Casketing	\$375
Staff Services for Gathering	\$495
Administration and Care of Cremated Remains	\$125
Disposition of Environmental Materials	\$ 59

Facilities

General and Service Areas of the Funeral Home	\$115
Facilities for Preparation, Sheltering & Refrigeration	\$375
Facilities for Gathering	\$495

Vehicles & Equipment

General/Emergency Vehicle	\$150
Vehicle for Transfer from Place of Death	\$250
Funeral Coach for Transfer to Local Crematorium	\$495

Additional Services and Supplies

Personalized Stationery Package	\$495
Personalized Book of Memories Website	Included
Aftercare Consultation	Included
Cremation Assurance Program	Included

Total of Itemized Charges	\$5624
<i>Service Package Savings with Casket Selection</i>	<i>(\$200)</i>
TOTAL PACKAGE PRICE	\$5424

***Deviations are not allowed from these Packaged Services;
you would otherwise refer to the Itemized Selection of Services***

PRIVATE GATHERING PACKAGE

(Private Gathering for up to 1 hour for up to 10 people)

This gathering package includes the supervision and coordination of the services required for cremation, 24-hour on call service, and exclusive use of our facilities for an informal gathering of invited family and friends (for up to 1 hour, for up to 10 people). Also included are such items such as obtaining certificates and signatures, all necessary documentation, estate settlement documents, which includes unlimited proof of death certificates, transfer from the place of death (within 50 km), and preparation and care as required. You will have use of the funeral home during the gathering, and areas such as offices, washrooms, lounge, parking facilities, and visitation suite, as well as all automotive equipment (vehicles are provided for a maximum three-hour period.)

Professional & Staff Services

Arranging and Coordinating of all Details and Services	\$1695
Documentation, Permits and Certificates	\$325
Staff for Transfer	\$175
Basic Preparation and Casketing	\$375
Staff Services for Gathering	\$495
Disposition of Environmental Materials	\$ 59

Facilities

General and Service Areas of the Funeral Home	\$115
Facilities for Preparation, Sheltering & Refrigeration	\$375
Facilities for Gathering	\$495

Vehicles & Equipment

General/Emergency Vehicle	\$150
Vehicle for Transfer from Place of Death	\$250
Funeral Coach for Transfer to Local Crematorium	\$495

Additional Services and Supplies

Personalized Video Tribute, Remembrance Cards and Photo Album	\$395
Personalized Book of Memories Website	Included
Aftercare Consultation	Included
Cremation Assurance Program	Included

Total of Itemized Charges	\$5399
<i>Service Package Savings with Casket Selection</i>	<i>(\$1100)</i>
TOTAL PACKAGE PRICE	\$4299

***Deviations are not allowed from these Packaged Services;
you would otherwise refer to the Itemized Selection of Services***

STANDARD CREMATION PACKAGE

This package includes the supervision and coordination of the services required for cremation, 24-hour on call service, with preparation and the use of a viewing room for a brief identification confirmation for one (1) person at an unspecified time. Also included are items such as obtaining certificates and signatures, all necessary documentation, estate settlement documents, which include unlimited proof of death certificates, transfer from the place of death (within 50 km), and preparation and care as required. Automotive equipment supplied in this package includes a sedan used for administrative purposes, a vehicle for transfer from the place of death, and a funeral coach for transfer to a local crematory. Also included in this package is the opportunity to accompany your loved one to the crematorium, and the staffing and coordination of a graveside urn burial/ennichement (or local delivery of the cremated remains) at a later date. *(This package does not include the use of a TV, sound system or other A/V equipment.*

Professional & Staff Services

Arranging and coordinating of all Details and Services	\$1550
Documentation, Permits and Certificates	\$325
Staff for Transfer	\$175
Basic preparation and casketing	\$375
Embalming	Included
Staff Services for Private Family Viewing (up to 1 hour)	Included
Staff to Transfer to Local Crematorium	\$150
Administration and Care of Cremated Remains	\$125
Disposition of Environmental Materials	\$ 59

Facilities

General and Service Areas of the Funeral Home	\$115
Facilities for Preparation, Sheltering & Refrigeration	\$375
Facilities for Private Family Viewing (up to 1 hour)	Included

Vehicles & Equipment

General/Emergency Vehicle	\$150
Vehicle for Transfer from Place of Death	\$250
Funeral Coach for Transfer to Local Crematorium	\$495

Additional Services and Supplies

Cremation Assurance Program	Included
Personalized Book of Memories Website	Included
Aftercare Consultation	Included
Follow-out to Crematorium	Included
Staffing and Coordination of a Graveside Urn Burial/Ennichement	Included
Total of Itemized Charges	\$4144
<i>Service Package Savings with Casket Selection</i>	<i>(\$1445)</i>
TOTAL PACKAGE PRICE	\$2699

***Deviations are not allowed from these Packaged Services;
you would otherwise refer to the Itemized Selection of Services***

BASIC CREMATION PACKAGE

This package includes the in-person or online coordination of all services required for a direct cremation, with basic preparation and a digital photo identification of the deceased. Also included is the completion and registration of all necessary documents, 24-hour transfer from the place of death (within 50 km) to a local crematory, and unlimited Proof of Death Certificates provided upon the return of the cremated remains to the family (usually within 10 days). *(This package does not include washing or dressing, drafting or inserting a newspaper notice, or a personalized obituary page on our website.)*

Professional & Staff Services

Arranging and coordinating of all Details and Services	\$1295
Documentation, Permits and Certificates	\$325
Staff for Transfer	\$175
Basic preparation and casketing	\$375
Staff to Transfer to Local Crematorium	\$150
Administration and Care of Cremated Remains	\$125
Disposition of Environmental Materials	\$ 59

Facilities

General and Service Areas of the Funeral Home	\$115
Facilities for Preparation, Sheltering & Refrigeration	\$375

Vehicles & Equipment

General/Emergency Vehicle	\$150
Vehicle for Transfer from Place of Death	\$250
Funeral Coach for Transfer to Local Crematorium	\$495

Additional Services and Supplies

Cremation Assurance Program, Book of Memories Website, Aftercare Consultation	Not Included
---	---------------------

Total of Itemized Charges	\$3889
<i>Service Package Savings with Casket Selection</i>	<i>(\$1690)</i>
TOTAL PACKAGE PRICE	\$2199

***Deviations are not allowed from these Packaged Services;
you would otherwise refer to the Itemized Selection of Services***

Green Service Packages

We are proud to offer green funeral, cremation and burial options in an effort to help families create events that minimize their impact on the environment.

We encourage you to talk with us about what environmental issues and practices are most important to you. Together, we can put a plan in place for personalized services that will match your environmental values.

Although there are only a few natural burial cemeteries and land preserves in this part of Ontario, doing your part in the selection of an eco-friendly casket, urn and stationery to complement earth-friendly services, are all choices you can make to plan a greener goodbye.

These Service Packages have been designed to reflect the most commonly selected services; if you do not see one that meets your needs, please consult with us and we will create a customized selection to better suit your preferences and respect your values.

GREEN FUNERAL SERVICE PACKAGE – BURIAL

Two Periods of Visitation

The Green Funeral Service Package includes the supervision and co-ordination of all services required during the arrangement conference, 24-hour on call service, two periods of visitation (2 hours each), funeral service and final disposition of your loved one. Included are items such as obtaining certificates and signatures, all necessary documentation, estate settlement documents, which includes an Aftercare consultation, unlimited proof of death certificates, transfer from the place of death (within 50 km) and environmentally-friendly preparation and care of your loved one for private viewing. Also included is the full use of the funeral home during visitation and the funeral service (or transfer of our equipment to the ceremony location), and areas such as offices, washrooms, public telephone, lounge, parking facilities, visitation suite, chapel and clergy room. Automotive equipment supplied in this package includes a sedan used for administrative and clergy purposes, a vehicle for transfer from the place of death and a funeral coach for transfer to a local cemetery. All vehicles are provided for a maximum three-hour period. Please refer to our casket selections for a listing of the environmentally-friendly merchandise options.

Professional & Staff Services

Arranging and coordinating of all Details and Services	\$1695
Documentation, Permits and Certificates	\$325
Staff for Transfer	\$175
Basic Preparation and Casketing	\$375
Staff Services for Visitation (two 2 hour periods)	\$390
Staff Services for Ceremony	\$760
Disposition of Environmental Materials	\$ 59

Facilities

General and Service Areas of the Funeral Home	\$115
Facilities for Preparation, Sheltering & Refrigeration	\$375
Facilities for Visitation (two 2 hour periods)	\$390
Facilities for Ceremony (or Equipment Transfer offsite)	\$495

Vehicles & Equipment

General/Emergency Vehicle	\$150
Vehicle for Transfer from Place of Death	\$250
Funeral Coach for Transfer to Local Cemetery	\$495

Additional Services and Supplies

Environmentally-Friendly Stationery Package	\$495
Personalized Book of Memories Website	Included
Aftercare Consultation & Cremation Assurance Program	Included
Total of Itemized Charges	\$6544
Package Savings	(\$505)
TOTAL PACKAGE PRICE	\$6039

***Deviations are not allowed from these Packaged Services;
you would otherwise refer to the Itemized Selection of Services***

GREEN FUNERAL, MEMORIAL OR CELEBRATION PACKAGE - CREMATION

Two Periods of Visitation

The Green Funeral Service Package includes the supervision and co-ordination of all services required during the arrangement conference, 24-hour on call service, two periods of visitation (2 hours each), funeral service and final disposition of your loved one. Included are items such as obtaining certificates and signatures, all necessary documentation, estate settlement documents, which includes an Aftercare consultation, unlimited proof of death certificates, transfer from the place of death (within 50 km) and environmentally-friendly preparation and care of your loved one for private viewing. Also included is the full use of the funeral home during visitation and the funeral service (or transfer of our equipment to the ceremony location), and areas such as offices, washrooms, public telephone, lounge, parking facilities, visitation suite, chapel and clergy room. Automotive equipment supplied in this package includes a sedan used for administrative and clergy purposes, a vehicle for transfer from the place of death and a funeral coach for transfer to a local crematorium. All vehicles are provided for a maximum three-hour period. Please refer to our casket and urn selections for a listing of the environmentally-friendly merchandise options.

Professional & Staff Services

Arranging and coordinating of all Details and Services	\$1695
Documentation, Permits and Certificates	\$325
Staff for Transfer	\$175
Basic Preparation and Casketing	\$375
Staff Services for Visitation (two 2 hour periods)	\$390
Staff Services for Ceremony	\$760
Administration and Care of Cremated Remains	\$125
Disposition of Environmental Materials	\$ 59

Facilities

General and Service Areas of the Funeral Home	\$115
Facilities for Preparation, Sheltering & Refrigeration	\$375
Facilities for Visitation (two 2 hour periods)	\$390
Facilities for Ceremony (or Equipment Transfer offsite)	\$495

Vehicles & Equipment

General/Emergency Vehicle	\$150
Vehicle for Transfer from Place of Death	\$250
Funeral Coach for Transfer to Local Crematorium	\$495

Additional Services and Supplies

Environmentally-Friendly Stationery Package	\$495
Personalized Book of Memories Website	Included
Aftercare Consultation & Cremation Assurance Program	Included
Total of Itemized Charges	\$6669
<i>Package Savings</i>	<i>(\$505)</i>
TOTAL PACKAGE PRICE	\$6164

***Deviations are not allowed from these Packaged Services;
you would otherwise refer to the Itemized Selection of Services***

ADDITIONAL SERVICES & SUPPLIES

Aftercare Consultation <i>*Included in all packages except the Basic Cremation Package</i>	\$495*
<ul style="list-style-type: none">This service is provided to assist families and executors in completing forms and prioritizing tasks which must be completed during the weeks immediately following the death of a loved one. (This is not meant to replace any legal, tax or other professional services.)	
Personalized Book of Memories Website <i>*This is included in all packages except the Basic Cremation Package</i>	\$250*
<ul style="list-style-type: none">A personalized webpage for your loved one, and a place for family and friends to leave condolences, send messages, share photos and memories.	
Cremation Assurance Program <i>*This is included in all packages except the Basic Cremation Package</i>	\$295*
<ul style="list-style-type: none">A program unique to our funeral home, this is how we ensure transparency and attention to detail throughout the entire cremation process. A tracking system using personalized identification discs allows us to monitor each step of the cremation process, during which your loved one never leaves our care. This is how we can guarantee that the cremated remains returned to you are those of your loved one.	
Use of Equipment & Supplies <i>All Packages (except Graveside Burial & Standard/Basic Cremation Packages) include the Use of Equipment & Supplies (for Rental of Equipment & Supplies with Cremation Packages, please see page 33)</i>	INCLUDED IN ALL PACKAGES
<ul style="list-style-type: none">Memory Boards for photographs and use of oak frames and standing easels for display, flower stands, casket bier, urn ark, card racks, pens and all necessary supplies; includes offsite delivery and collection.	
Coordination and Staffing of Graveside Burial/Urn Burial/Enrichment <i>*This is included in all packages except the Basic Cremation Package</i>	\$250*
<ul style="list-style-type: none">One staff member to coordinate, oversee and attend the Graveside Burial, Urn Burial or Enrichment at a local cemetery; includes use of a General Vehicle and delivery of the urn.\$150 fee applies for each additional staff member required to attend, based on cemetery requirements.	
Coordination and Supervision of Follow-Out to Crematorium <i>*This is included in all packages except the Basic Cremation Package</i>	\$250*
<ul style="list-style-type: none">Staff to schedule and coordinate all details involved with arranging a time for family members to accompany their loved one to a local crematorium (within 40 km) at a specified time.	
Scattering Service Package	\$195
<ul style="list-style-type: none">For those who prefer a simpler form of final disposition, at an unspecified time our staff member will scatter cremated remains upon unoccupied Crown land at Bronte Creek Provincial Park. Our Scattering Service includes transportation of cremated remains to the designated area, all entrance fees, and scattering performed by one of our funeral professionals.	
Pallbearer Assistance (3 hours use, per person)	\$195
<ul style="list-style-type: none">Pallbearers or Attendants at Service and/or Graveside (up to 3 hours, per person)	

ADDITIONAL SERVICES & SUPPLIES

Personalized Stationery Package

\$495

- Customized Photo Register Book
- Personalized In Remembrance Cards and/or Prayer Cards
- Custom Video Slideshow (up to 100 photos; an additional \$1 per photo over 100 will apply)
- Custom Hard Cover Coffee Table Photo Book
- Thank You Cards (2 packs of 25)
- Keepsake Box
- Crucifix (if wished)

Personalized Video Tribute

A professionally designed slideshow (using 25, 50, 75, or 100 photos and your choice of musical background) that will bring your family photos to life in a creative and celebratory way. Many people choose to play this video during a visitation, gathering or service where family and friends can enjoy the special memories together. Video Tributes are available in a variety of formats to suit your family's needs.

Personalized Legacy Photo Book

Legacy Photo Books are a compilation of cherished photos and memories in one professionally designed book that celebrates the life of your loved one. Many people have intentions of creating a photo book but never find the time to actually do so. This makes the process easy – you provide the photos and a professional team of designers creates the book. It is then professionally bound with stitch binding and printed on ISO photo safety paper. This photo book is a great way to honour your family memories and showcase your loved one's life.

Personalized Video Tribute, Remembrance Cards & Photo Album

\$395

- Custom Video Slideshow Tribute (up to 100 photos included*) & Hard Cover Photo Book
- Personalized In Remembrance Cards and/or Prayer Cards

Custom Memorial/Remembrance Cards and/or Prayer Cards

\$225

- Custom In Remembrance Cards and/or Prayer Cards (per 100)
- Minimum order 100 cards

Custom Photo Register Book

\$140

- Personalized Guest Register Book with photographs/images of your choice.

Basic Guest Book

\$75

- Simple Guest Register Book for family & friends to sign.

Thank You Cards

\$50

- Assorted Selection (per pack of 25)

Hairdressing

\$75

- The professional services of a hairdresser, barber or stylist.

Bereavement Authority of Ontario (BAO) Oversight & Licensing Fee **This fee is charged by the BAO and applies to all Packages.*

*\$30

DISBURSEMENTS

Disbursements are non-funeral home charges that are added to the contract in order to alleviate a family from having to pay numerous organizations at the time of need. The funeral home will arrange for and pay for these outside costs on your behalf. The following is a list of items that are often classified as disbursements:

Clergy Honorarium – this is an amount paid to the clergy for their services. The clergy sets this amount.

Coroner's Fee – this is a fee charged by the coroner for issuing a certificate that allows cremation to take place or for a certificate, which allows for the decedent to be taken outside of Ontario. The Chief Coroner for Ontario sets the fee.

Cremation Fee – this is the fee charged by the crematorium for their services.

Church Fees – when having a service at a church or other off site venue, additional fees may be charged for various people (i.e. organist, custodian, use of hall, etc.).

Municipal Death Registration Fee – this is a fee charged by the local municipality to register the death. The fee is set by the municipality and may vary.

Newspaper Notice(s) – these are charges for death notices placed in newspapers or radio or other media outlets.

CASKET SELECTIONS

The value, selection and price of caskets vary and are affected by numerous factors including materials of construction, amount of material required, interior fabric, design details, craftsmanship, and personalization features. This is a curated selection of our most popular options. We have many more to choose from if those listed do not meet your needs.

WOOD CASKETS *These products are all suitable for cremation*

<p>CARDBOARD (Williams)</p>  <p>Cardboard Container with Chipboard Base; suitable up to 250 lbs. \$395</p>	<p>POPLAR (Williams Eco 100)</p>  <p>ECO 100 Basic Poplar Wood with natural finish, no liner or interior (no pillow) with rope handles \$525</p>	<p>POPLAR (Williams Eco 200)</p>  <p>Basic poplar wood cremation container, natural finish, natural cotton liner with pillow, fixed wood bar handles \$745</p>
<p>PORTLAND (Northern)</p>  <p>Poplar with Portland Pine Stain, Natural Rustic Finish, Rosetan Crepe Interior \$1695</p>	<p>SOLID POPLAR (Victoriaville Eden)</p>  <p>Natura Solid Poplar, Natural Finish, 100% Natural Cotton Interior \$1895</p>	<p>SIMPLICITY (Northern)</p>  <p>Solid Pine Construction with Medium Stain Satin Finish, Ivory Crepe Interior \$2095</p>
<p>NORWAY (Northern)</p>  <p>Solid & Veneer Poplar, Walnut Satin Finish, Ivory Crepe Interior \$2495</p>	<p>CARLTON ASH (Northern)</p>  <p>Solid & Veneer Ash, Light Golden Finish, Rosetan Crepe Interior \$3295</p>	<p>WINFIELD POPLAR (Victoriaville)</p>  <p>Solid & Veneer Poplar, Cherrywood Satin Finish, Tan Crepe Interior \$3295</p>
<p>HOMESTEAD MAPLE (Northern)</p>  <p>Solid Canadian Maple, Hand-Rubbed Gloss Finish, Cream Velvet Interior \$4495</p>	<p>BORDEAUX CHERRY (Victoriaville)</p>  <p>Solid Cherry with High Gloss Finish, Beige Velvet Interior \$8995</p>	<p>SOLID MAHOGANY (Victoriaville)</p>  <p>Solid Mahogany with High Gloss Finish, Beige Velvet Interior \$9995</p>



These products consist only of natural, raw materials; undyed, unbleached, woven cotton, plant-based adhesives, peg & dowel construction, walnut oil & beeswax coatings. Harvested wood is replaced through reforestation with Canadian Conservation Authorities.

CASKET SELECTIONS **(CONTINUED)**

METAL

These products are not suitable for cremation

TIGEREYE (Batesville)  16 gauge steel, shaded finish, champagne velvet interior \$7995	CASHMERE (Victoriaville)  18 gauge steel, cashmere brushed, beige velvet interior \$4995
---	--

RENTAL CASKETS

These products have been used before and may be used again

BORDEAUX CHERRY  Solid Cherry with High Gloss Finish, Beige Velvet Interior \$1795	HARROWSMITH OAK  Solid Oak with Satin Finish, Rosetan Crepe Interior \$1395
--	--

Casket Sizes

Adult – Range from 80.50”L x 25.50”W x 21”D to 84.50”L x 30.25”W x 23.25”D

Plus Size – Range from 80”L x 30” x 16”D to 84”L x 34” x 24”D

Youth – Range from 38”L x 16.25”W x 18”D to 62”L x 23.50 x 14” D

URN SELECTIONS

We would be happy to assist you in selecting an urn of your choice. With many options available, an urn can reflect the individuality of your loved one. Personalization and engraving are options that further enhance your selection.

<p>GOLFER (Eckels)</p>  <p>Sand Blast Cast Bronze Urn with Golfer Sculpture on Bronze Base \$1495</p>	<p>HEART COMPANION (Fabhaven)</p>  <p>A beautiful symbol of two lives shared, this two-piece marble companion urn will accommodate two people \$1595</p>	<p>ÉCLISSE GALET (Victoriaville)</p>  <p>Solid Bronze Urn with Burl Wood Surround \$995</p>
<p>KARINE BOUCHARD GLASS</p>  <p>Hand Made Glass Blown Urn made by Canadian artist Karine Bouchard \$1495</p>	<p>ALLEN SOLID MAPLE (Victoriaville)</p>  <p>Solid Maple Urn, Classic Rectangle Shape \$550</p>	<p>BUTTERFLY CLOISSONNÉ (Victoriaville)</p>  <p>Handcrafted from copper with Hand-applied porcelain enamel finish \$695</p>
<p>ARIA ASCENDING (Victoriaville)</p>  <p>Aria Ascending Metal Urn \$495</p>	<p>ASHEN PEWTER (Victoriaville)</p>  <p>Spun Brass with Pewter Colour Finish \$450</p>	<p>MAGNOLIA & LOVEBIRDS</p>  <p>Made of durable resin with hand-painted imagery flowing around the urn \$395</p>
<p>UNITY HEART-SHAPED (Butterworth)</p>  <p>Heart-shaped Urn with Wildflower Seeds that will bloom when urn is buried near the surface \$295</p>	<p>HAND-CARVED ROSEWOOD</p>  <p>Elegant Hand-carved Solid Rosewood Urn (Victoriaville) \$195</p>	<p>SCATTERING CYLINDER</p>  <p>Biodegradable Scattering Tube (various designs); suitable for airplane travel/transportation (Victoriaville) \$145</p>



These urns are made from biodegradable paper, and will break down over time when buried, or will biodegrade when placed in water.

RENTAL URN *This product has been used before and may be used again*

ROSEWOOD MEMENTO CHEST



Rosewood Chest, Burlwood Inlay with High Gloss Finish and Brass Lock \$95

KEEPSAKE URNS

Keepsake urns are smaller cremation urns designed for many different purposes. These may hold a portion of your loved one’s cremated remains, or a lock of hair or other memorabilia. Some people may choose a keepsake urn so they have a tangible remembrance of their loved one, and see them as a memento. Many of our regular-sized cremation urns are available in a keepsake design, with prices starting at \$95.

**OPAL CLOISONNÉ
(Victoriaville)**



Handcrafted from copper with Hand-applied enamel finish \$195

**SILVER SOULBIRD MALE OR
FEMALE (Commemorate)**



Polished brass surface glowing in rich tone of bright non-tarnish Silver, enhancing the sculptural form \$125

**MIDNIGHT TEALIGHT
(Commemorate)**



Midnight Pearl finish accented with Polished Silver Antique Pewter. Made of Brass & Aluminum with Tealight Candle Holder \$195

**WINGS OF HOPE
(Commemorate)**



Brass & Aluminum keepsake with hand-applied pearlescent finish (shown in Pearl, other colours available) \$95

**ASHEN PEWTER
(Victoriaville)**



Spun Brass with Pewter Colour Finish \$95

**SCATTERING CYLINDER
(Butterworth)**



Designed to simplify the scattering process, made of biodegradable material (many designs available) \$95

JEWELLERY SELECTIONS

LEGACY TOUCH

Legacy Touch specializes in fingerprint jewellery using a replication of your loved one’s fingerprint. These keepsakes feature engraved fingerprint images and may include personalized inscriptions or monograms. A variety of pieces can be created such as pendants, bracelet charms, rings and keychains. Prices starting at \$105.



*The price of silver & gold jewellery items vary due to the large and daily fluctuations in market pricing. We will be happy to provide you with current costs for the piece(s) you are interested in.

KEEPSAKE JEWELLERY

<p>SILVER CROSS CHARM NECKLACE (West Coast Memorials)</p>  <p>Petite Heart with Silver Angel Wing with Fingerprint and 18-24" chain. Will hold a small portion of cremated remains (if wished) \$245</p>	<p>PINE TREE NECKLACE (West Coast Memorials)</p>  <p>Pine Tree Stainless Steel Cremation Urn Necklace with 18-24" chain. Will hold a small portion of cremated remains (if wished) \$175</p>	<p>LOVEBIRD PENDANT NECKLACE (Commemorate)</p>  <p>Handmade Rhodium-plated Sterling Silver pendant with chain. Will hold a portion of cremated remains (if wished) \$375</p>
---	---	---

DNA BANKING





DNA Memorial

DNA Banking is an important step towards preserving history and improving the health of future generations. A family medical history helps document familial patterns which may impact your health, such as trends towards specific illnesses or conditions. DNA Memorial provides a family the last opportunity to collect the treasure of their deceased loved one’s DNA. They offer different options depending on your needs, such as providing a vial of extracted DNA for future use, testing for ancestry and testing one’s genetic predisposition.

\$395
and up




OUTER BURIAL CONTAINERS

Many families wish to select an outer container or burial vault to provide protection for a casket or urn that will be interred in the ground. Some cemeteries require an outer container or vault due to the heavy equipment used and the ongoing maintenance of the cemetery. We offer various burial vaults that have distinctive levels of protection to provide you with comfort and peace of mind.

<p style="text-align: center;">CONCRETE LINER (Superior/Leiden's)</p>  <p>Minimum liner, basic concrete, no seal or liner \$1295</p>	<p style="text-align: center;">MONTICELLO VAULT (Superior/Leiden's)</p>  <p>2,000lbs, 50-year warranty, single-reinforced, concrete exterior with a plastic reinforced cover and base \$1895</p>
<p style="text-align: center;">VENETIAN VAULT (Superior/Leiden's)</p>  <p>2,600lbs, 65-year warranty, single-reinforced burial vault, high-strength concrete with high-impact plastic and a reinforced cover and base, inner liner \$2395</p>	<p style="text-align: center;">STAINLESS STEEL VAULT (Superior/Leiden's)</p>  <p>3,000lbs, 75-year warranty, mid-line burial vault, cover and base double-reinforced with strong, corrosion-resistant stainless steel and high-impact plastic, brilliant stainless-steel carapace \$3895</p>

URN VAULTS

If you plan on ground burial for the urn, many cemeteries require that it be placed into an urn vault. A cremation urn vault is a lined and sealed outer receptacle that houses the cremation urn, protecting it from the weight of the earth and cemetery maintenance equipment that will pass over it. Lined urn vaults also provide protection from subsoil elements while preventing the ground from settling.

<p style="text-align: center;">UNIVERSAL URN VAULT (Superior/Leiden's)</p>  <p>Single-reinforced urn vault, Interior reinforced with Strentext, Beige Marbelon Exterior Interior \$995</p>	<p style="text-align: center;">STAINLESS STEEL VAULT (Superior/Leiden's)</p>  <p>Double-reinforced Cover & Base with Non-rusting Stainless and High-impact ABS Trilon; various colours and Personalization Available \$1295</p>	<p style="text-align: center;">BRONZE TRIUNE VAULT (Superior/Leiden's)</p>  <p>Double-reinforced, Corrosion-resistant Bronze & ABS Trilon Cover and Base, Black & Bronze in Colour, Personalization Available \$1495</p>
--	---	---

ITEMIZED SCHEDULE OF SERVICES

PROFESSIONAL & STAFF SERVICES

Arranging & Coordinating all Details and Services – Traditional/Memorial/Gathering Packages \$1695

- Professional consultation with licensed personnel, which may include but is not limited to, professional advice on options to meet your needs, including essential services relating to disposition, drafting notices, planning scheduling of services, advising regarding possible government benefits.
- Coordination of all rites and ceremonies, before, during and after they have been provided, including services and supplies provided by us, as well as those provided by third party suppliers, such as flowers, catering, etc.

Arranging & Coordinating all Details and Services – Graveside Burial Package/Standard Cremation Package \$1550

- Professional consultation with licensed personnel, which may include but is not limited to, professional advice on options to meet your needs, including essential services relating to disposition, drafting notices, planning scheduling of private viewings, advising regarding possible government benefits.
- Coordination of each phase of the arrangement and cremation/burial process, including private services and all supplies provided by us.

Arranging & Coordinating all Details and Services – Basic Cremation Package \$1295

- Professional consultation and communication with licensed personnel, which may include but is not limited to, professional advice on options to meet your needs, including essential services relating to disposition.
- Coordination of each phase of the basic arrangement and cremation process.

Arranging & Coordinating Details and Services – When Disposition has Been Arranged by Another Service Provider \$695

- Professional consultation with licensed personnel, which may include but is not limited to, professional advice on options to meet your needs, including drafting notices, planning scheduling of services, advising regarding possible government benefits.
- Coordination of all rites and ceremonies, before, during and after they have been provided, including services and supplies provided by us, as well as those provided by third party suppliers, such as flowers, catering, etc.

Arranging & Coordinating Details and Services – When decedent is being transferred/repatriated outside of Ontario \$995

- Professional consultation with licensed personnel, which may include but is not limited to, professional advice on options to meet your needs.
- This is a minimum charge and does not include shipping costs, transportation to an airport, consular fees, Certified Death Certificates, approval from the Public Health Department or any other fees for specific governmental requirements associated with the shipment of a decedent.

PROFESSIONAL & STAFF SERVICES

Documentation – Permits, Forms, Applications, Certificates	\$325
<ul style="list-style-type: none">• Completion and filing of all documents necessary to carry out the services and supplies requested, including, but not limited to, death registration, burial permit, coroner's certificate for cremation, documentation necessary to ship the decedent out of the country. As part of this service, we will provide you with Proof of Death Certificates; such certificates are usually accepted for most estate settlement purposes, but sometimes a provincial Death Certificate will be necessary and is available from the Office of the Registrar General.	
Staff for Transfer (24-hour service, within 50 km) <i>(Requires Use of Transfer Vehicle and/or Coach)</i>	\$175
<ul style="list-style-type: none">• Staff for 24-hour transportation of the decedent from one place to another, for example the hospital to our premises, or from our premises to the cemetery or crematorium using a transfer vehicle, for distances up to 50 km. A charge applies for each transportation request.	
Basic Preparation & Casketing	
<i>Requires Facilities for Preparation/Embalming/Shelter/Refrigeration</i>	
<ul style="list-style-type: none">• This encompasses the very basic care of the decedent (un-autopsied), including dressing or shrouding that may be required, and final casketing.	
Embalming <i>(Requires Basic Preparation & Casketing)</i>	\$125
<ul style="list-style-type: none">• Embalming is the process of sanitation, restoration and temporary preservation. Embalming is not legally required, but may be recommended to preserve the decedent between the time of death and the visitation or disposition of the deceased. Our professional funeral directors will make a recommendation based on the condition of the decedent and expected service needs.	
Staff Services for Visitation <i>(Requires Facilities for Visitation)</i>	\$195
<ul style="list-style-type: none">• Staff to coordinate and oversee the visitation (informal gathering) at our premises and/or an offsite location for any period prior to the ceremony.• Fees vary based on the number of periods of visitation.• If the visitation takes place at an offsite location, an equipment charge will apply. <i>(See Equipment Transfer to Church).</i>	
Staff Services for Gathering <i>(Requires Facilities for Gathering)</i>	\$495
<ul style="list-style-type: none">• Staff to coordinate and oversee an informal gathering of family and friends (for up to 3 hours) at our premises.	
Staff Services for Ceremony <i>(Requires Facilities for Ceremony/Equipment Transfer to Church)</i>	\$760
<ul style="list-style-type: none">• Staff to coordinate and oversee the ceremony or memorial service at our premises or an offsite location. Fees are charged per ceremony.	

PROFESSIONAL & STAFF SERVICES

Staff Services for Private Family Viewing <i>(Requires Facilities for Private Family Viewing)</i>	\$155
<ul style="list-style-type: none">• Staff to coordinate and oversee a Private Family Viewing for up to one (1) hour at our premises at a reserved time. <i>Only applies to Basic Cremation Package.</i>	
Administration and Care of Cremated Remains	\$125
<ul style="list-style-type: none">• Staff to schedule and coordinate the return of cremated remains from a local crematorium; includes the documentation and cataloguing of remains upon their return.	
Disposition of Environmental Materials	\$59
<ul style="list-style-type: none">• This fee applies to all funeral arrangements and reflects the costs to collect, transport and responsibly dispose of hazardous waste, pacemakers and radioactive implants and to comply with local municipal cross-connection control programs and backflow prevention.	

FACILITIES

General & Service Areas of the Funeral Home	\$115
<i>(Requires Arranging & Coordinating all Details and Services)</i>	
<ul style="list-style-type: none">• Use of our general and common areas, parking lots, public washrooms, heating, lighting and maintenance. This charge applies whenever services are provided.	
Facilities for Preparation/Embalming/Shelter/Refrigeration	\$375
<i>(Requires Basic Preparation/Embalming/Shelter/Refrigeration)</i>	
<ul style="list-style-type: none">• Facilities used to prepare, shelter and/or embalm the deceased; this charge applies whenever the decedent is in our facility for any purpose.	
Facilities for Visitation <i>(Requires Staff Services for Visitation)</i>	\$195
<ul style="list-style-type: none">• Designated facilities at our Funeral Home used for visitation for any period(s), prior to a ceremony or memorial service. Fees vary based on the number of periods of visitation.	
Facilities for Private Family Viewing <i>(Requires Staff Services for Private Family Viewing)</i>	\$100
<ul style="list-style-type: none">• Designated facilities at our Funeral Home used for Private Family Viewing for up to one (1) hour at our premises at a reserved time. <i>Only applies to Basic Cremation Package.</i>	
Facilities for Gathering <i>(Requires Staff Services for Gathering)</i>	\$495
<ul style="list-style-type: none">• Designated facilities at our Funeral Home used for an informal gathering of family and friends for up to 3 hours.	
Facilities for Ceremony (or Equipment Transfer to Offsite Location)	\$495
<i>(Requires Staff Services for Ceremony)</i>	
<ul style="list-style-type: none">• Designated facilities at our Funeral Home used for the ceremony or memorial service.• Fees are charged per day.	
Facilities for Reception	\$395
<ul style="list-style-type: none">• Designated facilities at our Funeral Home used for a reception following the ceremony or memorial service, which includes the set-up of the facilities and use of all amenities.• Fees are charged per event.• Food and beverages not included; please refer to our reception menu for options and pricing.	

VEHICLES & EQUIPMENT

General Duty/Administrative/Clergy/Emergency Vehicle	\$150
<ul style="list-style-type: none">Used to obtain necessary certificates, forms and signatures, clergy transportation, flower delivery, and any other required general duty driving (within daytime business hours).	
Vehicle for Initial Transfer	\$250
<ul style="list-style-type: none">Service vehicle to transfer the decedent from local place of death to the Funeral Home	
Funeral Coach for Transfer to Cemetery or Crematorium	\$495
<ul style="list-style-type: none">Used to transport the casket from the Funeral Home/Church to a local cemetery or crematorium	
Limousine	\$595
<ul style="list-style-type: none">7 passenger limousineBased on a 4-hour outside rental	
Vehicle and Staff Member for Evening Transportation of Clergy/Priest	\$125
<ul style="list-style-type: none">Local pick up and drop off as may be required.	
Vehicle for Subsequent Transfers of Decedent	\$250
<ul style="list-style-type: none">Service vehicle for any additional transfers of the decedent as may be required.	
Transfer to/from Lester B. Pearson International Airport, Toronto	\$350
<ul style="list-style-type: none">Service vehicle to transport the decedent to/from Pearson International Airport in Toronto, one way (per trip)	
Rental of Equipment & Supplies for Offsite Ceremony	\$395
<i>This fee applies when the funeral home will not be in attendance at the ceremony.</i>	
<ul style="list-style-type: none">Keepsake memory boards, oak frames and standing easels for display.	
 *Additional mileage – travel beyond 50 km from our facility will be charged at \$2.05/km, one way	
Vehicle Cancellation Charge	No charge
<ul style="list-style-type: none">This charge is only applied if the purchaser should cancel any vehicle charges within 36 hours prior to their scheduled use.	
Catering Cancellation Charge	No charge
<ul style="list-style-type: none">This charge is only applied if the purchaser should cancel any catering charges within 36 hours of their use.	
Facility Cancellation Charge	No charge
<ul style="list-style-type: none">This charge is only applied if the purchaser should cancel any facility charges within 36 hours prior to their scheduled use.	

OPTIONS RELATED TO PAYMENT

To lose someone you love is a devastating experience – often unexpected and unplanned. We treat every family we serve with fairness and equality, and we endeavor to provide the finest services and merchandise possible. It is also important that the arrangements are in keeping with your wishes and budget, and we rely on our client families to make their choice related to payment at the time of these arrangements.

Option One: Prompt Payment

Many families prefer to pay for their total expenses at the time of service arrangements. For those families, we are pleased to offer a 'compassionate prompt pay discount' of 2% on selected services, supplies and merchandise (cash disbursements excluded). We accept cash, cheque, bank draft, debit card, Interac e-Transfer, or payment may be made by Visa or MasterCard. (We regret that the discount cannot be honoured when paying by credit card.)

Option Two: Minimal Services

For our Minimal Service Packages and forwarding/transfer arrangements, payment in full is required at the time of service arrangements. Payment may be made by cash, cheque, bank draft, debit card, Interac e-Transfer, Visa or MasterCard.

Option Three: Full & Partial Services

For these services, we request full payment of all disbursements (taxes included) and 50% partial payment of all services, supplies and merchandise (taxes included) at the time of arrangements. Payment may be made by cash, cheque, bank draft, debit card, Interac e-Transfer, Visa or MasterCard. The balance will be due within 30 days of these arrangements and may be paid by cash, cheque, bank draft, debit card or Interac e-Transfer. We regret that the remaining balance cannot be paid by credit card.

Option Four: Prepayment

You may have already established a pre-paid funeral arrangement with our funeral home. In the event that additional services and merchandise are selected, these costs may be paid through any of the above payment options.



AFFILIATIONS

Smith's Funeral Homes is proud to be affiliated with Donald S. Smith and the following service providers:

Smith's Funeral Service
(Burlington) Limited
485 Brant Street and
1167 Guelph Line
Burlington, Ontario
905-632-3333

Smith's Funeral Service
(Stoney Creek) Limited
Stoney Creek Chapel
454 Highway #8
Stoney Creek, ON L8G 1G6
905-664-4222

Canadian Cremation & Burial
Services
452 Highway #8
Stoney Creek, ON L8G 1G6
(905) 545-8889

CORPORATE SOCIAL RESPONSIBILITY & PHILANTHROPY

Smith's Funeral Homes recognizes that it has a corporate and personal social responsibility to the people of its communities...and all humankind. We believe that businesses should do more than just provide goods and services; companies should have a significant role in helping their communities be a better place in which to live, participate and enjoy quality of life. We believe that Smith's can make a difference by representing, supporting and helping to sustain the concept of sharing through contributions of time, talent and resources.

We are proud to present an award annually to a graduating student at every public and Catholic high school in Burlington, Grimsby and Stoney Creek. The recipients are selected by the schools, with our goal being to acknowledge and support well-rounded students who will be entering a Health Care or Social Services related post-secondary education program. This is our way of recognizing and celebrating commitment to excellence by the youth in our communities.

For a full listing of the many incredible organizations and charities we support, please visit our website.



SERVICE GUARANTEE

We are committed to your complete satisfaction and guarantee that if you are not completely satisfied with any of our professional services or facilities, then we will adjust or eliminate that charge. We pride ourselves on the high quality of our services and our dedication to the community since 1938.



BURLINGTON • GRIMSBY • STONEY CREEK

Smith's Funeral Service (Grimsby) Limited

Stonehouse-Whitcomb Chapel

11 Mountain Street
Grimsby, ON L3M 3J7

Geoff Willis,
Managing Director

905-945-2755
info@smithsfh.com



www.smithsfh.com

Smith's Funeral Service (Grimsby) Limited and affiliated companies are proudly family owned since 1938, and are directly controlled by Donald S. Smith